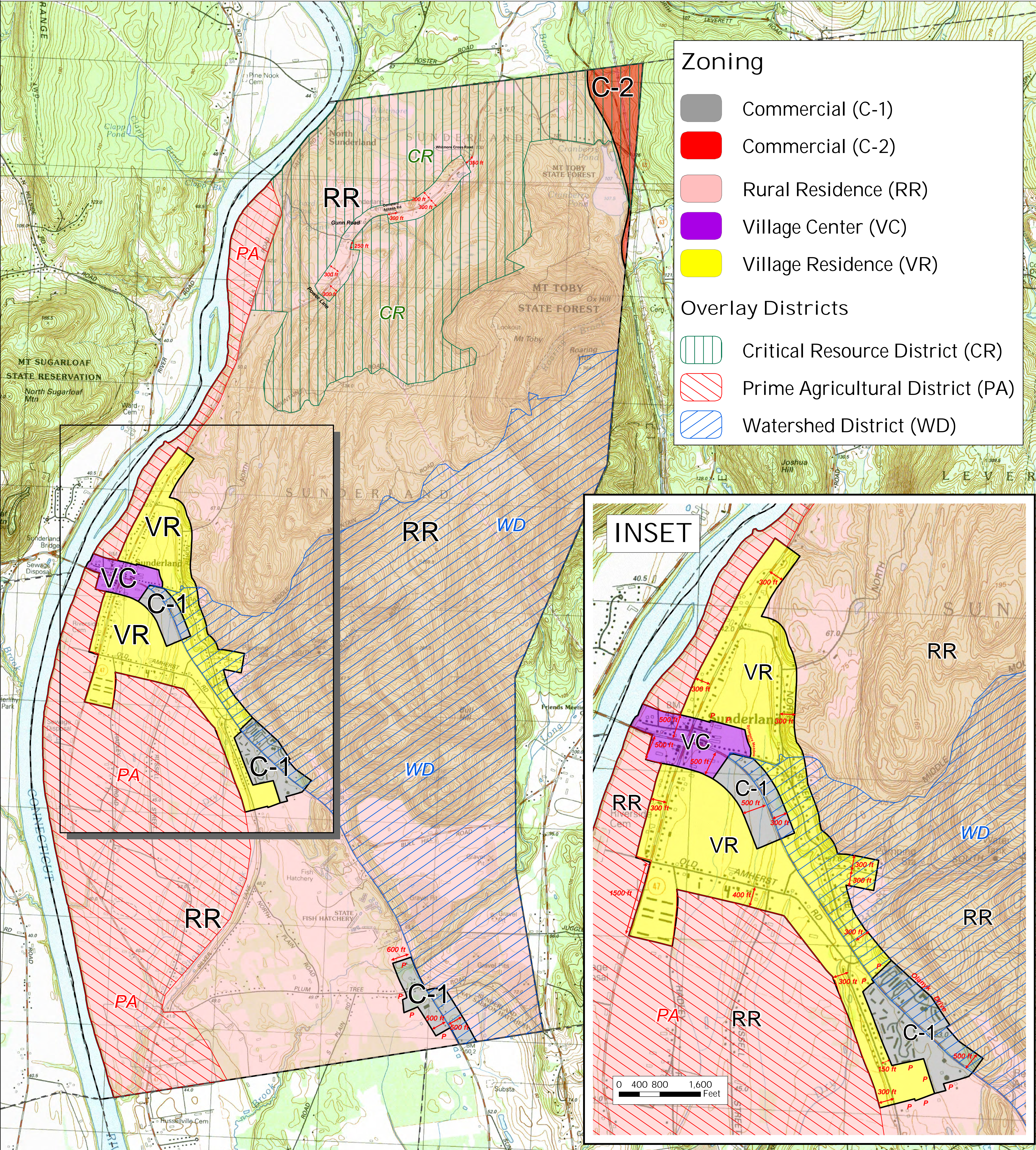


Zoning Map Sunderland, Massachusetts

April 10, 2012



Zoning

- Commercial (C-1)
- Commercial (C-2)
- Rural Residence (RR)
- Village Center (VC)
- Village Residence (VR)

Overlay Districts

- Critical Resource District (CR)
- Prime Agricultural District (PA)
- Watershed District (WD)

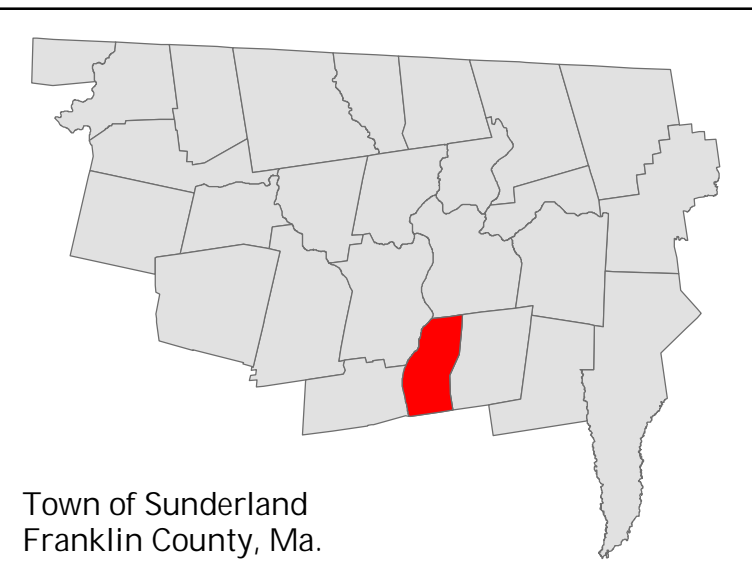
The Zoning Map for the Town of Sunderland has been amended by Town Meeting vote on the following dates: 10-21-72, 9-15-78, 6-7-99, 8-29-00, 7-29-02, 4-29-05, 4-30-10, 4-29-11, and (insert Town Meeting date), 2012.

**FRANKLIN REGIONAL
COUNCIL OF
GOVERNMENTS**
Main Office: 413-774-3167
425 Main Street
Greenfield, Massachusetts 01301

0 0.5 1 1.5 Miles

P - indicates property line, Town of Sunderland Assessor Maps current to January 1, 2012

Notations in feet indicate offsets from road centerlines or intersections



Map Sources:
Map produced by The Franklin Regional Council of Governments Planning Department. GIS data sources include the FRCOG Planning Department, the Massachusetts Highway Department and MassGIS. Digital data obtained from MassGIS represent the efforts of the Massachusetts Executive Office of Environmental Affairs and its agencies to record and correct errors in the GIS data that are brought to its attention. EOEIA maintains an ongoing program to record and correct errors in the GIS data that are brought to its attention. EOEIA makes no claims as to the reliability of the GIS data or as to the implied validity of any uses of the GIS data. EOEIA maintains records regarding all methods used to collect and process these digital data and will provide this information on request. Executive Office of Environmental Affairs, MassGIS EOEIA Data Center, 251 Causeway Street, Suite 900, Boston, MA, 017-626-1000.
USGS 7.5 minute series topographic quadrangles scanned to create digital USGS 7.5 minute ArcInfo coverages. The resulting scanned map is projected into NAD83 Massachusetts State Plane meters. Data provided by MassGIS.
Zoning data provided by the Town.
Note: Depicted boundaries are approximate and are intended for planning purposes only. Portions of the source data were obtained from 1:100,000 scale maps, therefore the accuracy of the line work on this map is +/- 100 feet.

April 10, 2012